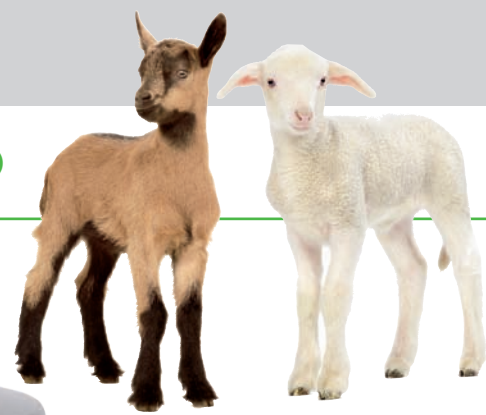


AUTOMATIC LAMB FEEDER ECO



Automatisch besser.

**FÖRSTER
TECHNIK®**

A STRONG START WITH ECO

Automatic feeders from Förster-Technik have proven themselves world-wide in the raising of lambs and kids. They provide low-labour feeding and ensure the healthy growth of the animals.

The automatic lamb feeders from Förster-Technik are extremely cost-efficient and affordable. With only one device you can feed up to 240 lambs reliably and safely. The machines are very robust, since many of the components are based on components from Förster calf feeder technology, which has been tried and tested countless times over. At the same time the automatic lamb feeders are exactly adjusted to the individual needs of your young animals.

Ad-lib machines – feeding until full!

The lambs ingest their feed via a sucking teat as desired. The feed which consists of water and milk substitute (MP) is prepared hot and fresh in small portions in feeding boxes and quickly and intensively mixed. The water remains constant at the selected temperature, thanks to the special built-in boiler. The powder system precisely dispenses all established kinds of MP.

Ready, steady, drink!

Approximately 20-30 lambs can be fed per feeding station. Depending on the model and your needs, you can equip the automatic feeders with up to 8 feeding stations.

Operation made easy

The automatic lamb feeder can be easily and intuitively operated thanks to its compact control unit and the 7-segment display. With the clearly laid out function menu, the water and MP portion size can be configured separately with the direct select buttons. A portion counter allows you to easily monitor the amount of feed that has been dispensed.



Intuitive operation

Reliably at the right temperature

The boiler, which has a temperature sensor, an electronic heating regulator and a minimum temperature monitor, ensures that the feed always has the right temperature, and can be easily configured and checked.



Mixer heating system available as an accessory

High mixture production is guaranteed through its up to 5 kW strong heat output. In addition you can equip your feeder with a mixer heating unit.





This keeps the milk in the mixer warm, also when it is not drunk over a longer period of time. This way your lambs always receive feed with a constant pleasant temperature, which is especially important for goat kids who do not really like to drink milk that has cooled off.

Easy cleaning

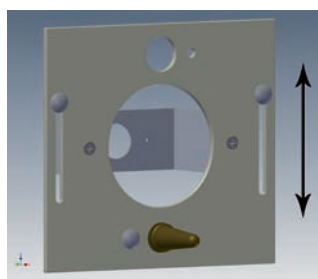
The semi-automatic mixer cleaning system is efficient and easy to operate. At the press of a button you have water with a high temperature at your disposal. The open, tiltable feeding box is easily accessible and makes it possible to easily do a function check at any time. You can easily remove deposits in the suction hoses with the help of the hose cleaning pistol and also clean longer hoses with no trouble.



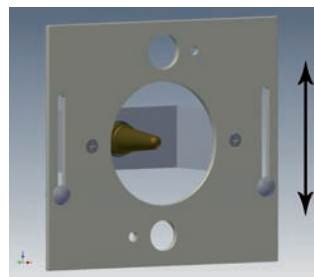
Trouble free hose cleaning

Teat position for large and small

The height adjustable front plate and the variable teat position make it possible to mount the teat flexibly and age appropriately. The teat is mounted from below and in a frontal position, which makes it easier to train the lambs.



Front plate with frontal teat position for quick training



Front plate with teat on the suction bracket

For older lambs the teat can be transferred to the suction bracket, so that leftover feed can drain off away from the animals.

Flies will buzz off.

The fine-pored fly screen for the mixer prevents flies from getting into the feeding box. Steam that arises in the feeding box can easily escape because of the large size of the pores; condensation water is easily prevented this way.



Optional fly protection screen



AUTOMATIC LAMB FEEDER ECO

Technical data

General data

- Powder tank capacity approx. 35 kg
- Heat output 2.8 kW (240 V), 3.2 kW (230 V), 5.0 kW (400 V)
- Feed preparation 2.5 to 3 l/min
- Feeding station max. 8
- Number of lambs 20 to 30 per feeding station



Machine type	TAP5-EZ2-28	TAP5-EZ2-32	TAP5-EZ2-50
Heat output in kW	2.8	3.2	5.0
Electrical connection	240 V/L1, L2/Grd/60 Hz/15 A	230 V/L/N/PE/50 Hz/16 A	230 V/400 V/3/N/PE/50 Hz/16 A
Max. feeding stations	6	6	8

Dimensions

- Height (basic configuration in cm) 114 cm
- Width 58 cm
- Depth 52 cm
- Weight approx. 34 kg

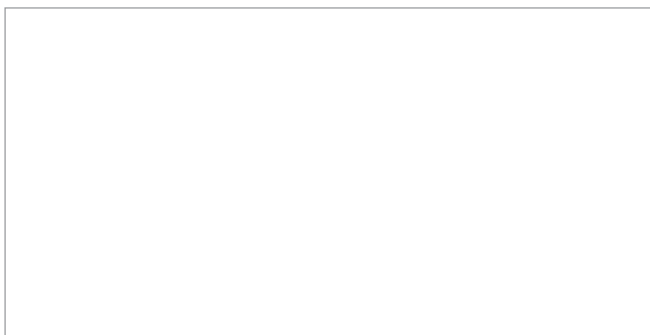
Extras and accessories

- Fly protection
- Mixer heating
- Water tank (at low water pressure)
- Height adjustable front plate incl. teat and suction bracket

Standard equipment

- Electronic heating regulation with minimum temperature monitoring
- Electronic water level indicator
- Transparent powder hopper attachment
- Hose cleaning pistol

Presented by:



Manufacturer:

Förster-Technik GmbH
Gerwigstraße 25
D-78234 Engen
Tel: +49 (0)7733/9406-0
Fax: +49 (0)7733/9406-99
E-Mail: info@foerster-technik.de
Internet: www.foerster-technik.de